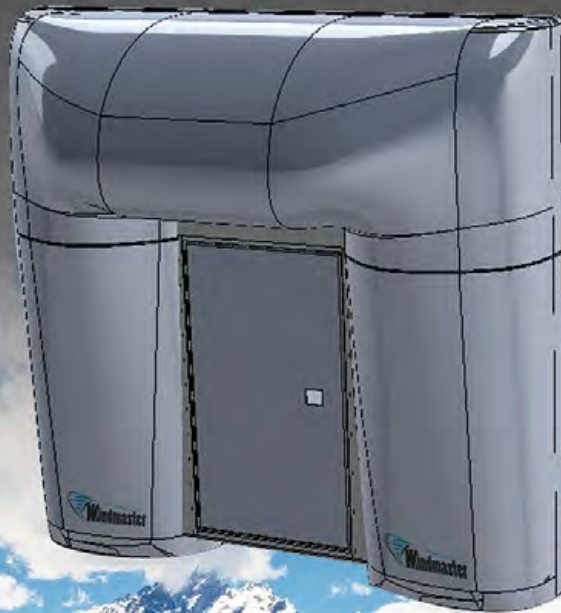


the LOOK[®]
engineered sliding systems

Windmaster ORIGINAL

- Over 7% CFD Wind Drag Reduction
- Over 3.5% Fuel Economy
- 33" Upper Fairing tapers down to 10"
- Man Door STD



1st Ever
**Aerodynamic
Bulkhead
launched by
LCS 2014**



8 Great Models of Engineered ROLL TOPS

www.loadcovering.com 1-877-790-5665

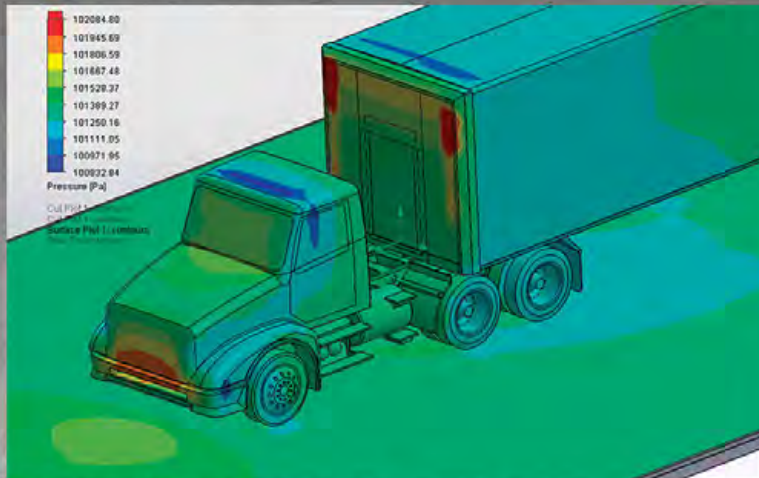
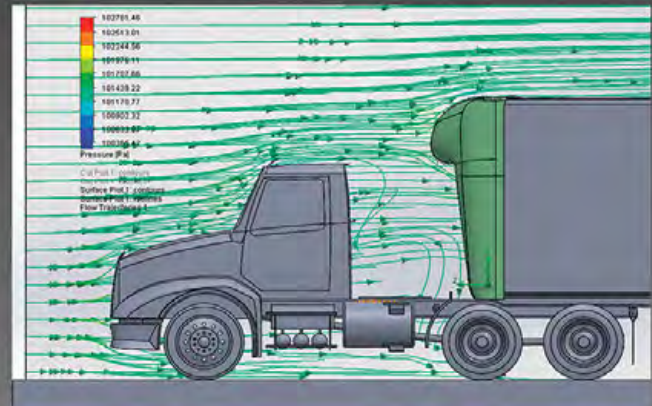
CFD FLOW SIMULATION ON TRAILER FRONT BULKHEAD FAIRING FOR AERODYNAMIC DRAG REDUCTION 7% - 9% (FUEL ECONOMY BETWEEN 3.5% - 4.5%)



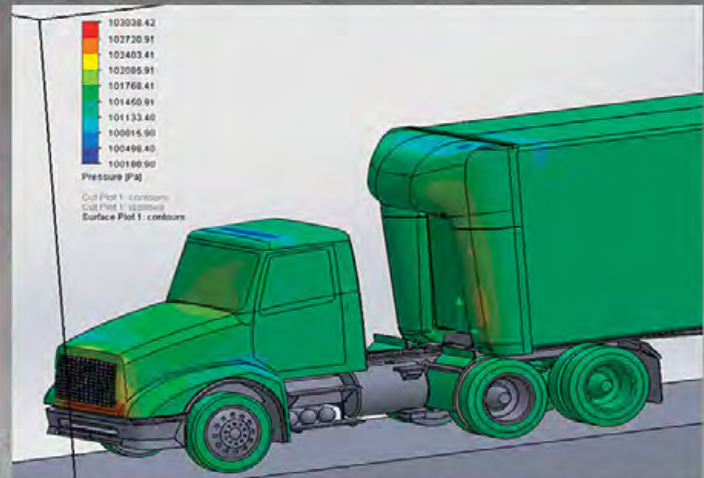
LCS-Flatbed Trailer with & without WindMaster Bulkhead equipped with Sliding Tarp System

CFD Simulation Analysis

System Ht.	WindMaster Bulkhead Wind Drag Reduction		Improved Fuel Economy
	Yaw Angle 0°	Yaw Angle 6°	
7ft (84") Ht.	7.0%	7.9%	3.75%
8ft (96") Ht.	8.3%	13.8%	5.5%
100" Ht.	9.1%	10.2%	4.8%



WindMaster AirFlow Without
100" High System – No Aerodynamics



WindMaster AirFlow With
100" WINDMASTER Front - 9.7% Wind Drag Reduction / Increase Fuel Economy 4.8%



Office: 1051 Clinton St. Buffalo, NY 14206
Installations and Service:
 2251 Wehrle Drive, Williamsville, NY 14221 (exit 49 NY I-90)
 Toll Free: 1-877-790-5665 Fax: 1-877-345-5623
 info@loadcovering.com



5499 Harvester Road, Burlington ON L7L 5V4
 Toll Free: 1-800-465-8277 Fax: 905-335-8499
 info@loadcovering.com
 www.loadcoveringsolutions.com